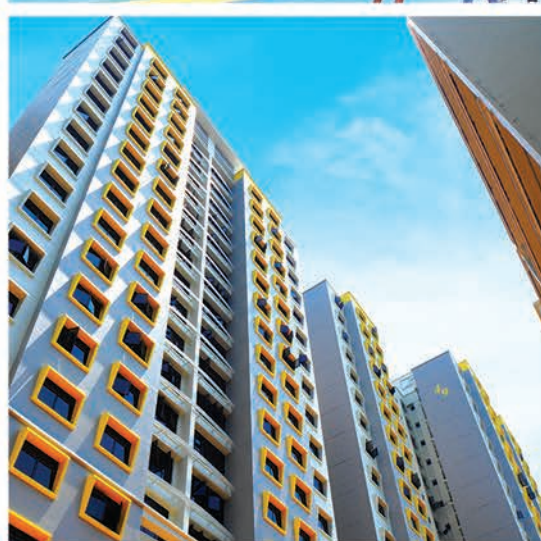


Our home

IN MARINE PARADE TOWN



Marine Parade
Town Council



Content

3 Chairman's Message



ABOUT US

4 About Marine Parade Town Council

5 Types of Cyclical and Improvement Works

6 - 7 About Marine Parade Town



COMPLETED & UPCOMING PROJECTS

8 - 13 Braddell Heights

14 - 19 Geylang Serai

20 - 25 Joo Chiat

26 - 31 Kembangan - Chai Chee

32 - 37 Marine Parade

38 - 43 MacPherson

44 - 49 Mountbatten



UPCOMING TOWNWIDE PROJECTS

50 Lift Replacement Programme & Lift Enhancement Programme

51 SolarNova Programme

Chairman's Message

Our home in Marine Parade Town (Marine Parade GRC, MacPherson SMC and Mountbatten SMC) has undergone many changes since it was formed 30 years ago. It has transformed into a matured vibrant town with a distinct flair of its own under the Town Council's management.

The transformation of Marine Parade Town is not just physical, but also people-centric. In the context of the Town Council, a home is no longer just about providing a well-maintained living environment. We put our focus on three main aspects that essentially made up our home in Marine Parade Town – People, Community and Environment.

The estate infrastructure developments in our Town are carefully designed and built with our people in mind – to enhance quality of living and to meet the needs of our evolving demographics. Through creating quality communal spaces in our HDB estate, we hope to encourage social cohesiveness and connectivity among our residents. As part of our vision to create a sustainable town environment, we have been actively exploring ways to conserve energy and be more eco-friendly. Initiatives such as installation of LED fittings and Solar Photovoltaic (PV) panels were implemented to make our public housing estate more energy efficient and build capabilities in renewable energy.

Moving forward, our Town Council will continue to work closely with partner agencies and residents to implement estate development plans to create an inclusive home for all. Residents can look forward to developments and enhancements in their constituencies over the next few years.

This brochure outlines some of the completed projects in the past years (from 2015 to 2019) and upcoming improvements in the years ahead by our Town Council. It also showcases some of the improvement works in the Town by other agencies for your reference. We welcome your suggestions and involvement in the estate planning and management so that we can better tailor our development plans to your needs.

Mr Lim Biow Chuan
Chairman
Marine Parade Town Council



MPs of Marine Parade Town attending Harmony Iftar 2018 @ Marine Parade Cluster
(From left: Mr Seah Kian Peng, Professor Fatimah Lateef, Mr Tan Chuan-Jin, Mr Goh Chok Tong, Ms Tin Pei Ling, Mr Edwin Tong and Mr Lim Biow Chuan)



About Marine Parade Town Council

Marine Parade Town Council was formed in 1989 under the Town Councils Act to empower elected MPs and residents to work together in the management of their estates. This way, each Town can develop its distinctive character and identity.

Over the years, the Town Council together with the estates under our management have grown in stature and maturity. The precincts in our Town had undergone various upgrading and town improvement projects. The estate facilities are constantly rejuvenated and modernised to improve the quality and comfort of the living environment for our residents.

The Town Council consists of Marine Parade GRC (Braddell Heights, Geylang Serai, Joo Chiat, Kembangan - Chai Chee and Marine Parade), MacPherson and Mountbatten SMCs.

Currently, the Town Council is managing 58,548 residential units, 1,407 commercial units and 1,226 market and food stalls.



Roles and Responsibilities



Upkeep of cleanliness and routine maintenance of common properties such as void decks, common corridors and lift areas.



Maintenance of mechanical and electrical installations such as lifts, water pumps, switch rooms and lightings.



Provision of cyclical repairs to estate amenities, repainting of blocks and re-roofing.



Provision and upgrading of amenities such as linkways, lift lobbies, playgrounds and residents' corners.



Maintenance of landscape grounds within the estates.

Types of Cyclical and Improvement Works carried out by Town Council

The Town Council maintains the common property of the HDB public housing estates. Besides carrying out routine maintenance works, the Town Council also implements improvement/upgrading works to revitalise the building facilities within our Town.



Cyclical Works

The Town Council carries out cyclical maintenance projects to rejuvenate the common property in our HDB estates. Below listed are some of the cyclical works that are carried out.

- Repair & Redecoration (R&R) Works
- Reroofing
- Rewiring
- Replacement of Booster Pumps and Transfer Pumps
- Replacement of Water Pipes and Water Tanks
- Replacement of Refuse Chute Flushing Systems
- Replacement of Fire Fighting and Protection Systems

Town Improvement Projects

Local estate facilities such as covered linkways, playgrounds and fitness corners are constructed and upgraded to provide our residents with a more conducive environment to live in. Such enhancements give each precinct their individual vibrancy while catering to the specific needs of residents living within these areas.



Neighbourhood Renewal Programme (NRP)

The Town Council implements NRP to enhance and modernise the HDB neighbourhood living environment.



Lift Cyclical and Improvement Works

Cyclical lift replacements and improvements are carried out to ensure the lifts in our Town are safe for use.

- Lift Enhancement Programme
- Lift Replacement Programme
- Lift Parts Cyclical Replacement





BRADDELL HEIGHTS

Mr Seah Kian Peng
MP for Marine Parade GRC



GEYLANG SERAI

Professor Fatimah Lateef
MP for Marine Parade GRC



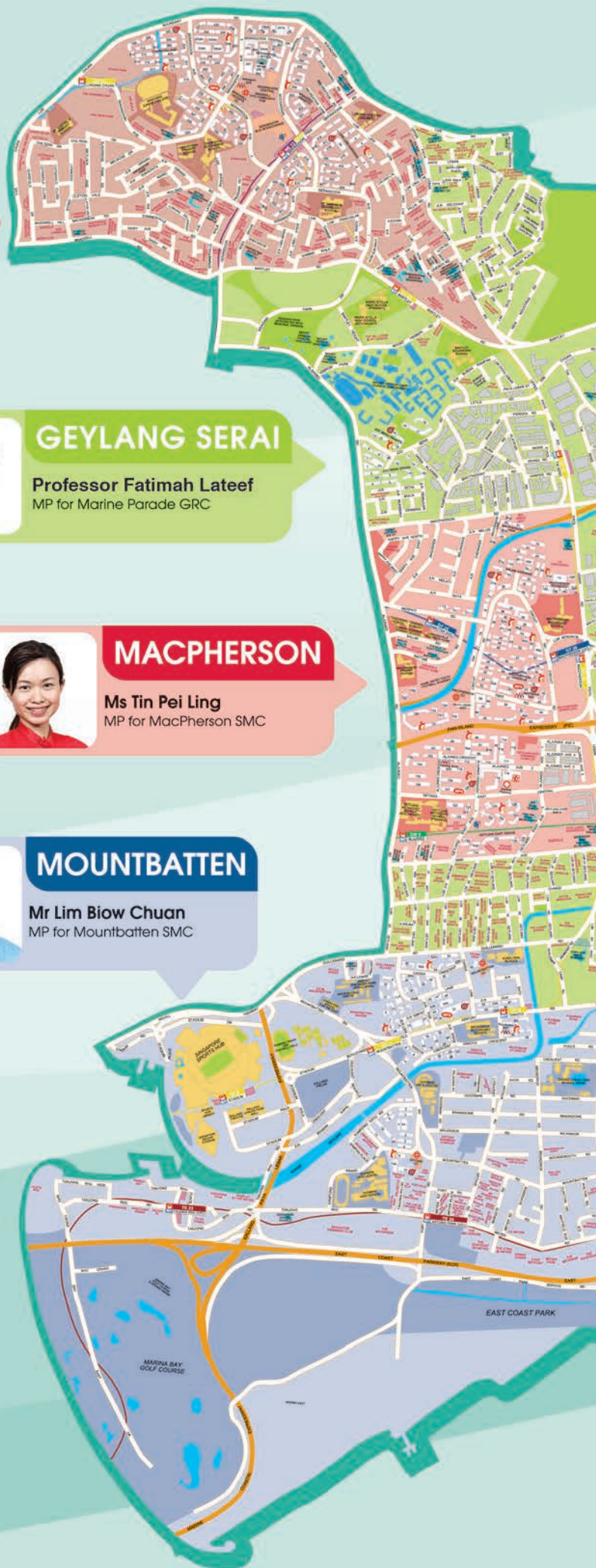
MACPHERSON

Ms Tin Pei Ling
MP for MacPherson SMC



MOUNTBATTEN

Mr Lim Biow Chuan
MP for Mountbatten SMC



About Marine Parade Town

Marine Parade Town comprises of seven divisions: Braddell Heights, Geylang Serai, Joo Chiat, Kembangan-Chai Chee, MacPherson, Marine Parade, and Mountbatten.

The vibrancy of Marine Parade Town comes from the diversity in culture and heritage, making this place we call 'home' uniquely one of its kind. Each division has its own history and distinct identity that is strengthened only by the people who live in it.

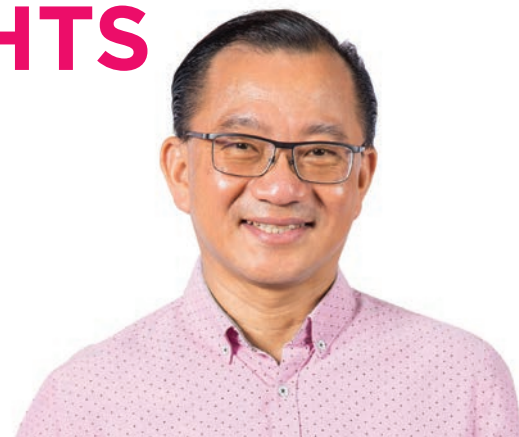
The Town Council, together with our MPs of Marine Parade Town and partner agencies, are committed to building a better home for everyone and will continue to improve the estate infrastructures to serve you better.



BRADDELL HEIGHTS

Message from

Mr Seah Kian Peng
MP for Marine Parade GRC



Dear Residents,

Braddell Heights estate has grown and transformed into a vibrant and inclusive neighbourhood over the years. Part of the story is about the improvements we have made to the infrastructure.

All our HDB blocks in Braddell Heights have completed the Lift Upgrading Programme (LUP). With these new lift shafts in place and lifts stopping at every floor, our residents can get home faster and more conveniently.

Apart from LUP, our estate has been revitalised in many ways. It has undergone other upgrading programmes and improvement works as well – 39 HDB blocks with Neighbourhood Renewal Programme (NRP), 51 HDB blocks with Repair & Redecoration works and 2 private estates with Estate Upgrading Programme (EUP). With these improvements, residents have more quality spaces. In 2018, we welcomed a new Dyslexia Association of Singapore (DAS) Learning centre at Block 411 Serangoon Central and Silver Ribbon's 3rd centre – H.O.L.A.'s (Hang On Life's Awesome) at Block 208 Serangoon Central. The presence of these two centres in Serangoon will raise greater awareness on dyslexia and mental wellness within the community.

This is part of Braddell Heights' journey to provide a more holistic care and support for our residents as we seek to become a more inclusive and caring society.

In the coming years, we will continue to do more to improve our home in Braddell Heights. 45 blocks undergoing the Home Improvement Programme (HIP) that helps to address common maintenance issues of ageing flats will be completed. We can also expect more new localised projects such as covered linkways, playgrounds, and fitness corners to be upgraded and built in the neighbourhood for the convenience and enjoyment of our residents.

In addition, I'm excited to share that a new polyclinic located at the Serangoon Central / Upper Serangoon area is slated to be built by 2024/25. This integrated facility will also comprise an active ageing hub as well as a dialysis centre. This polyclinic and associated facilities will bring better access and convenience to healthcare for our residents here.

But as I said, all these improvements are just part of the story. The other part lies in the magic of the people of Braddell Heights – a caring, giving and inclusive community where everyone cares for the community and leaves no one behind.

Together we can build a better home for all to live, work and play in.

**Yours truly,
Seah Kian Peng**



Our Community Bringing People Together

Snippets of Past Events & Activities



Neighbourhood Renewal Programme Completion Ceremony for Blks 231 - 237 Serangoon Avenue 3, and Blks 253, 254, 254A, 261 - 263 Serangoon Central Drive



Number of benefitting blocks for completed cyclical works from 2015 - 2019:



Repair &
Redecoration
(R&R) Works
51 blocks



Reroofing
52 blocks



Rewiring
8 blocks



Booster Pumps
95 blocks



Refuse Chute
Flushing Systems
72 blocks



Official Opening Ceremony
of New Lift at Blk 404
Serangoon Ave 1

Opening of Dyslexia
Serangoon Learning Centre &
Sliver Ribbon's 3rd Centre -
H.O.L.A. ▼



Launch of Community Garden
near Blk 410 Serangoon Central



BRADDELL HEIGHTS

Some of the Completed Projects



1 High Link between Blks 302 and 303 Serangoon Avenue 2



2 Linkway between Blks 238 & 239 Serangoon Avenue 2



3 Sheltered Ramp at Blk 235 Serangoon Avenue 3



4 Replacement of Lifts "A", "B" and "C" at Blk 266 Serangoon Central Drive



5 Improvement to Open Space with Seating Facilities at Blk 266 Serangoon Central Drive



6 Drop-Off Porch at Blk 255 Serangoon Central Drive



7 Staircase at Blk 254A Serangoon Central Drive



8 Mini Park with Trellis and Seating Facilities at Blk 263 Serangoon Central Drive



9 Linkway from Blk 333 Serangoon Avenue 3 leading to Bus Stop



10 Upgraded Fitness Corner at Blk 210 Serangoon Central



11 Upgraded Playground near Blk 331 Serangoon Avenue 3



12 Lift and Link Bridge in front of Blk 404 Serangoon Ave 1 for Barrier-Free Access to Bus Stop



13 Repair & Redecoration Works at Blks 401 to 414 Serangoon Central / Avenue 1

14 Upgrading Works at Sunshine Park



Jogging Track



Playground



15 Upgraded Game Courts and Seating Gallery at Blk 6 Lorong Lew Lian



16 Sheltered Ramp at Blk 6 Lorong Lew Lian

Some of the Upcoming Projects



- Integrated Healthcare Facility in Serangoon by MOH

- Polyclinic:

- Active Ageing Hub:

- Kidney Dialysis Centre (KDC)

-
- A detailed map of the Serangoon Central area in Singapore. The map shows a grid of streets including Serangoon Avenue, Serangoon Central Drive, Serangoon Road, and Boundary Road. Key landmarks and locations marked include Serangoon NPC, Serangoon Central HTS Community Hub, Serangoon Bus Interchange, Serangoon Office, Serangoon Heights CC, Serangoon Heights, Recreation Lane, Recreation Road, Joong Hiang Road, and Pava Labar Road. The map also shows various bus routes and stops, including the NE 12 MRT station. The map is color-coded with different shades of brown and green to represent different areas and parks.

Repair & Redecoration Works

- Blks 232A, 234A and 236A Serangoon Avenue 2
- Blks 253, 254A and 254 to 258 Serangoon Central Drive
- Blks 261 to 263, 265 and 266 Serangoon Central Drive
- Blk 264 Serangoon Central (Braddell Heights Community Hub)
- Blk 267 Serangoon Avenue 3
- Blks 308 to 317 Serangoon Avenue 2
- Blks 321 to 329 Serangoon Avenue 2/3
- Blks 301 to 307 and 318 to 319 Serangoon Avenue 2



• Construction of Linkway over Existing Ramp:

- In front of Blk 319 Serangoon Avenue 2 to Bus Stop
- Between Blk 416 Serangoon Central & Blk 1 Lorong Lew Lian

• Construction of High Link between Blks 238 & 239 Serangoon Avenue 2

• Construction of Drop-off Porches at Blks 204, 206 and 209/210 Serangoon Central

• Upgrading of Public Toilets at Blk 265 Serangoon Central Drive (1st floor) and Blk 266 Serangoon Central Drive (2nd floor)

• Rewiring Works:

- Blks 232A, 234A, 236A and 267 Serangoon Avenue 2/3
- Blks 255 to 258 Serangoon Central Drive



Upgrading of Fitness Corner at Blk 201 Serangoon Central



Construction of Drop-off Porch at Blk 241 Serangoon Avenue 3



Upgrading of Playground at Blk 264 Serangoon Central



*Images shown are for illustration purposes only. Actual designs may vary from the images.

GEYLANG SERAI

Message from

Professor Fatimah Lateef
MP for Marine Parade GRC



Dear Residents,

Geylang Serai has always prided itself on its strong *gotong royong* spirit which emphasises working together for the betterment of the community. Strengthening this spirit is especially important in times when the world is becoming more and more divided, and to do so, we must remind ourselves that every single person who lives and works in the town must be able to demonstrate kindness, graciousness, and civic-consciousness. We all play a part in shaping the community and environment which we live in.

Over the past four years, our estate has grown and developed both socially and environmentally. Local community events and activities were held to promote social cohesiveness and strengthen the bonds among our residents. As for the infrastructures in our estate, we continue to carry out improvements gradually in a bid to provide better and well-facilitated common spaces for all. In the next few pages, you would see some of the more notable completed projects such as the new Ubi MRT Station for greater transport convenience, and Wisma Geylang Serai, an integrated hub which houses our Geylang Serai Community Club (CC), and brings together a range of services for the community.

The Lift Upgrading Programme (LUP) has also brought added day-to-day convenience to many of our residents, especially the elderly, children, and disabled. The LUP has played a critical part in our estate development as we move towards a barrier-free society and also in handling

issues of ageing. As part of Geylang Serai's estate renewal strategy, LUP was completed alongside other initiatives like the Neighbourhood Renewal Programme (NRP), Home Improvement Programme (HIP) and Community Improvement Projects. Communal spaces in our estate such as linkways, playgrounds, fitness corners and games courts are constructed and upgraded. These refurbishments and improvements have refreshed and modernised our mature estate.

Moving forward, we will implement more infrastructure improvements to furnish our residents with a more conducive home environment. On the precinct level, residents in Joo Seng can look forward to the upcoming NRP which provides enhanced communal spaces such as a mini park, jogging track, seating area and playground. For the other parts of our estate, we will also continue to upgrade our older amenities to better cater to our residents.

Residents are at the heart of everything we do. We will continue in our efforts to provide and improve the common infrastructures and facilities for the benefit of our residents. With that, let us work closely together to create a warmer and gracious home for our community in Geylang Serai.

**Yours truly,
Fatimah Lateef**



Our Community Bringing People Together

Snippets of Past Events & Activities



Joo Seng Green
Welcome Party

Reopening of Blks 13 &
14 Haig Road Market and
Food Centre



Geylang Serai Mid-Autumn Town Night 2017



Clean & Green Events



Number of benefitting blocks for completed cyclical works from 2015 - 2019:



Repair &
Redecoration
(R&R) Works
58 blocks



Reroofing
27 blocks



Transfer Pumps
44 blocks



Water Pipes
27 blocks



Booster Pumps
55 blocks



Refuse Chute
Flushing Systems
29 blocks

GEYLANG SERAI

Some of the Completed Projects



1 Upgraded Jogging Track behind Blks 4 & 5 Upper Aljunied Lane



2 New Basketball Court and Upgraded Fitness Corner near Blk 16 Joo Seng Road



3 Covered Linkway near Blk 15 Joo Seng Road



4 Upgraded Covered Linkway between Blks 1 & 3 Haig Road



5 Repair & Redecoration Works at Blk 4A Eunos Crescent Market & Food Centre



6 Repair & Redecoration Works at Blks 13 & 14 Haig Road Market & Food Centre



7 Upgraded Community Plaza between Blks 416 & 417 Eunos Road 5



8 Upgraded Covered Linkway from Blks 4A Eunos Crescent to Eunos MRT



9 Wisma Geylang Serai (1 Engku Aman Turn, S408528)



13 Downtown Line - Ubi Station by LTA



10 Upgraded Playground & Footpath near Blk 18 Eunos Crescent



14 Community Plaza near Blk 12 Eunos Crescent



11 Upgraded Amphitheatre near Blk 23 Eunos Crescent



12 Upgraded Badminton Court near Blk 21 Eunos Crescent



15 Upgraded Fitness Corner between Blks 11 & 12 Eunos Crescent

GEYLANG SERAI

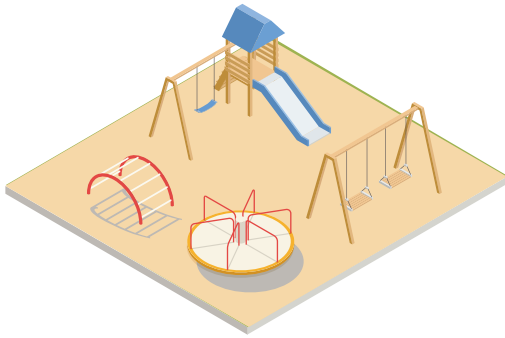
Some of the Upcoming Projects

• Upgrading of Playground and Fitness Corner:

- Near Blks 6, 7 Haig Road, 15 Joo Seng Road

• Upgrading of Playgrounds:

- Blk 14 Eunos Crescent
- Near Blk 32 Eunos Crescent
- Near Blks 412 and 413 Eunos Road 5



• Upgrading of Fitness Corners:

- Blk 33 Eunos Crescent
- Blk 2 Upper Aljunied Lane
- Blk 3 Upper Aljunied Lane

• Upgrading of Street Soccer Court at Blk 11 Eunos Crescent



• Garden Foothpath at Blks 15 – 17 Joo Seng Road

• Repair & Redecoration Works:

- Blks 1, 1A, 2, 2A, 3, 5 to 25 Eunos Crescent
- Blks 412 to 413 Eunos Road 5
- Blks 4A, 8, 10 to 21 Joo Seng Road
- Blk 7 Upper Aljunied Lane

• Rewiring Works:

- Blk 2A Eunos Crescent
- Blk 1A Eunos Crescent
- Blks 5 to 18 and 24 to 25 Eunos Crescent
- Blks 13 and 14 Haig Road

Improvements to Signalised Junctions by LTA at

- Jalan Eunos / Bedok Reservoir Road
- Jalan Eunos / Eunos Crescent
- Sims Avenue
- Paya Lebar Road / Ubi Avenue 3

eg: Turning pocket, delineation bollards, chevron markings, "give way to pedestrians" sign and raised kerbs



*Neighbourhood Renewal Programme

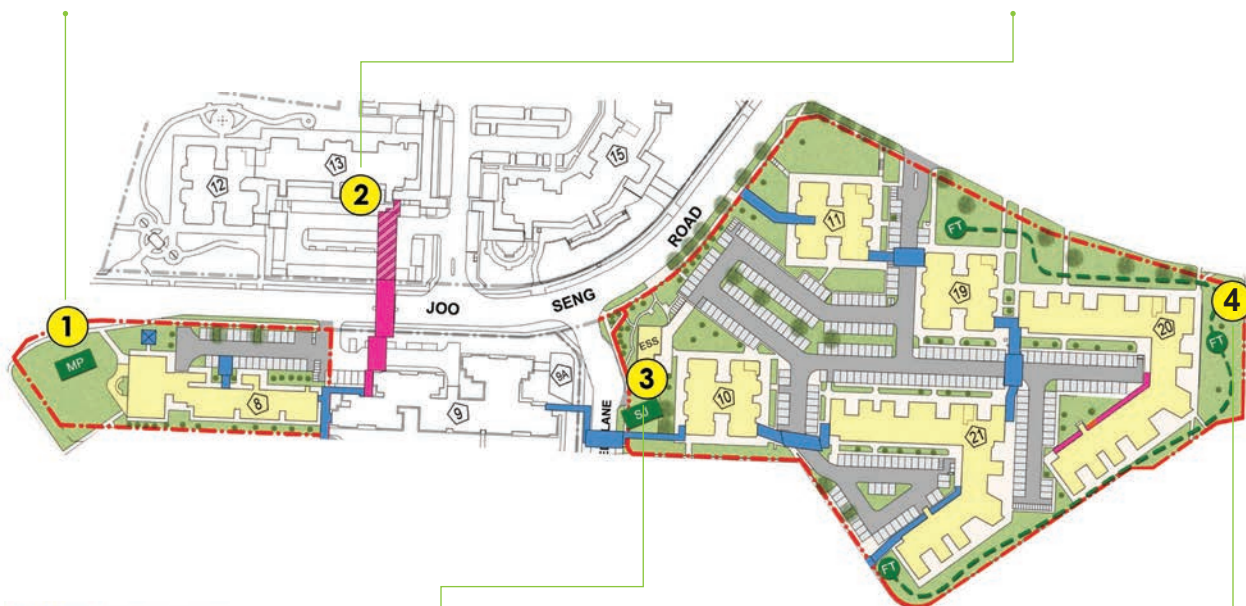
Blks 8, 10, 11 and 19 – 21 Joo Seng Road

*The project will be implemented if at least 75% of the eligible residents in the block vote in favour for the programme at the time of polling.

View of Mini Park towards Blk 8 Joo Seng Road



High Linkway from Blks 9 – 13, across Joo Seng Road



- NRP BOUNDARY
- EXISTING LINKWAY
- PROPOSED LINKWAY
- PROPOSED LINKWAY (UNDER SEPARATE FUNDING)
- MP MINI PARK
- SJ SERENE JUNCTION
- FT PERIPHERY FITNESS TRAIL

View of Fitness Trail, Start / End Node adjacent to Blk 21 Joo Seng Road



Serene Junction adjacent to Blk 10 Joo Seng Road



View of Landscaped Seating Area along Joo Seng Road



View of Playground (2 – 5 yr olds) along Fitness Trail adjacent to Blk 20 Joo Seng Road

*Images shown are for illustration purposes only. Actual designs may vary from the images.

JOO CHIAT

Message from

Mr Edwin Tong Chun Fai

MP for Marine Parade GRC



Dear Residents,

Joo Chiat has a rich history and heritage, diverse cultures, and no shortage of good food (we say it's the best on this island!).

At the same time, Joo Chiat holds many fond memories for all who call it home.

We turned 60 last year, in 2019. This was marked by a series of special events like the Joo Chiat 60 Fiesta, a very special National Day Dinner and the Christmas Finale. Joo Chiat residents are special, and even as we continue to cherish the unique qualities of Joo Chiat, we must also strengthen community bonds and create a harmonious neighbourhood for residents. Maintaining cleanliness and ensuring that we can live in a safe and wholesome environment are of paramount importance to us.

To this end, over the years, you have shared with us many suggestions and ideas on enhancing the community, and how to make improvements. I welcome this very much. Working with relevant authorities to implement them, we are heartened to see that these new and upgraded facilities have brought more convenience and benefits to you and your families. We are thankful for your active participation in making Joo Chiat a home that cares. We hope to hear more from you so that we can work towards improving Joo Chiat continually.

In the meantime, there are a few new improvements that we can look forward to in the coming years. We will have two new MRT stations, Siglap and Marine Terrace, connecting Joo Chiat to the city area, and to Woodlands. Also, Frankel and Siglap estates will undergo Estate Upgrading Programme (EUP). Under this programme, the public amenities in these estates will be enhanced to better cater to residents' needs. Proposed improvement works are shown on page 25. I hope that we can garner your support and feedback to co-create and design the EUP improvement works.

Whether you have stayed in Joo Chiat for the past few decades or moved into our district recently, we are always happy to see our old friends and welcome new faces at our community get-togethers. Do come by with your friends and loved ones to experience the diversity of our festive celebrations, and join us at walkabouts, dialogues and activities organised throughout the year to catch up and get to know each other more.

A big thank you for all your support, contributions and effort! We look forward to making more memories with you in the coming years and beyond.

**Yours truly,
Edwin Tong**



Our Community Bringing People Together

Snippets of Past Events & Activities

Street Parties



Clean Up Campaign



House Visits



Joo Chiat 60th Anniversary

JOO CHIAT

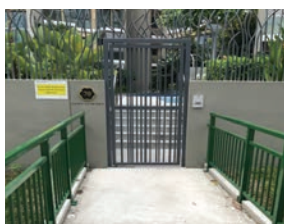
Some of the Completed Projects



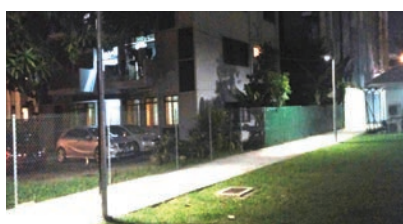
1 Anti-littering/Bulky Waste Standees in Joo Chiat Estates



2 New Left-Turn Lane at Telok Kurau Road and East Coast Road Junction



3 Side-gate at 70 St Patrick's Condominium



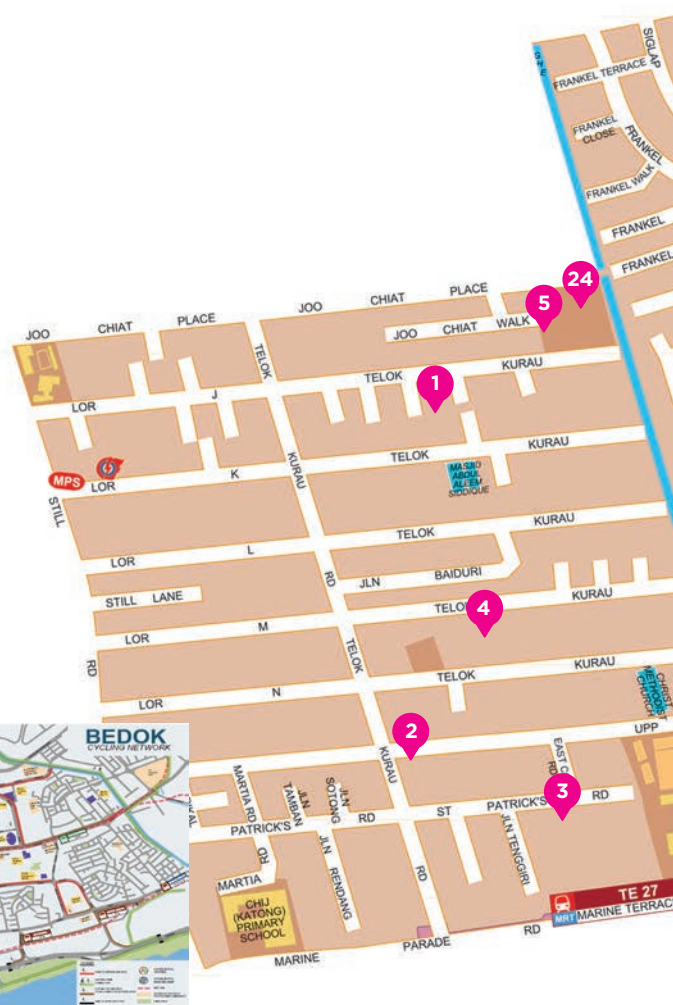
4 Installation of Street Lamps along Footpath beside NAFA Kindergarten near Seawind Estate



5 Expansion of Playground Facilities at Telok Kurau Park



6 13km of Cycling Network in Bedok (East Coast precinct)



7 New Track Surface and addition of Side Drains to relieve frequent ponding situation at Siglap Park Connector



8 Lighted Footpath at Dunbar Walk



9 Clearing of Overgrown Vegetation and Crack Repair at Drainage between 47A and 49 Dunbar Walk



10 Resurfacing of Grass Turf to Granolithic Surface for Fitness Corner at Greenfield Drive Park



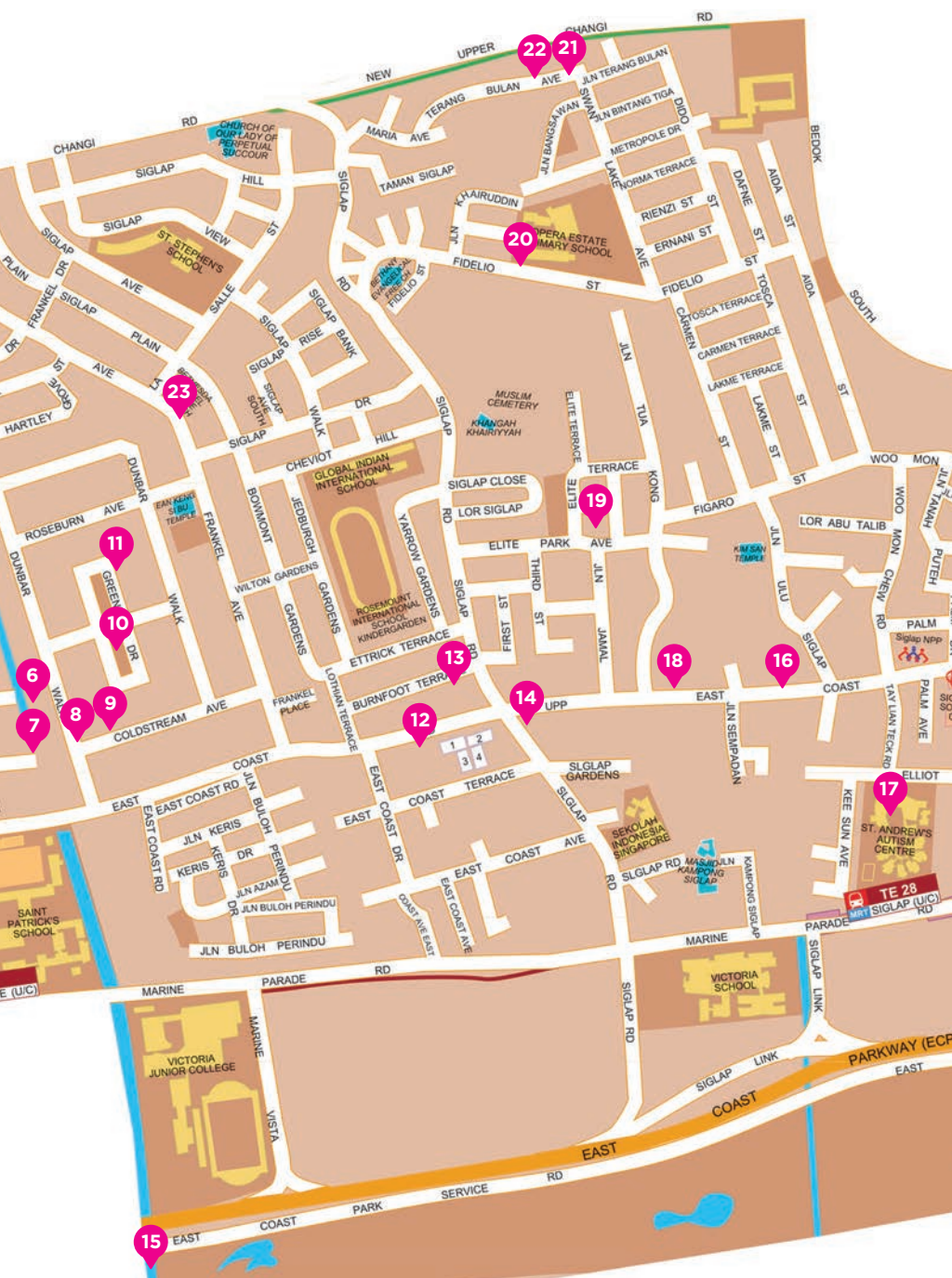
11 Extension of Bike Sharing Yellow Box at Greenfield Drive Playground



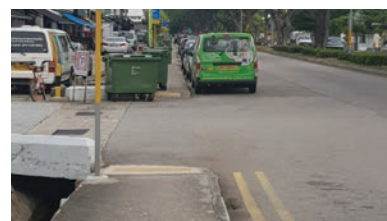
12 Re-development of Blks 1 to 4 East Coast Road



13 Widened Footpath at junction of Burnfoot Terrace and Siglap Road with additional measures of "SLOW" Road Markings along Siglap Road and Painted Chevrons on both sides of Burnfoot Terrace



24 New Public Toilets at Telok Kurau Park



23 Drawing of Double Yellow Lines and additional Enforcement Cameras to alleviate illegal parking along Frankel Avenue



22 Stairs to New Upper Changi Road (Swan Lake Avenue)



21 Barrier-free Accessibility Ramp near Bus Stop facing New Upper Changi Road



18 Railings and Pedestrian Crossing installed at junction of Jalan Tua Kong and Upper East Coast Road



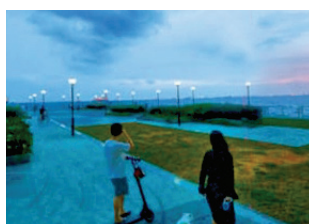
19 Expansion of playground facilities at Elite Terrace Park



20 Installed Channel Drains in front of 45 and 47 Fidelio Street



14 Creation of Motorcycle Lots at service road along East Coast Road



15 Improvement of Siglap Outfall



16 New Cycling Lane at traffic junction of Siglap Linear Park and Upper East Coast Road



17 Enhanced School Zone (40km/h 'When Lights Flash' sign)

JOO CHIAT

Some of the Upcoming Projects

Thomson - East Coast Line (TEL) by LTA



Marine Terrace Station



Siglap Station



Estate Upgrading Programme (EUP) at Frankel & Siglap Estates:



Enhancing our Estate Parks

- Improve landscape and usability of parks
- Include child-friendly play equipment
- Upgrade and include fitness facilities, for adults and seniors
- Create adequate walking paths
- Include and enhance community gardens



Covering of Open Drains

- Upgrade drains and culverts
- Upgrade open drains, prevent chokage and build up of stagnant water
- Covering up of open drains to create more pedestrian walking space
- Create safer footpaths for users
- Install safety railings and enhance the use of walkways
- Re-surfacing uneven footpaths

Barrier-Free Access

- Improve accessibility and mobility for wheelchairs and strollers
- Improve mobility for visually impaired individuals
- Include anti-slip grooves to enhance safety



Upgrading of Lamp Posts

- Conversion from halogen to LED lamp post for better illumination

Widening of Roads

- Enhance and widen roads (where possible) to facilitate ease of traffic
- Enhance safety for road users and pedestrians
- Improve visibility

KEMBANGAN-CHAI CHEE

Message from

Mr Tan Chuan-Jin

MP for Marine Parade GRC



Dear Residents,

Thank you for your support and feedback for the past four years. With your support, we were able to bring many wonderful improvement works with our partner agencies to make your living environment better.

Since 2015, there have been several upgrading and improvement projects in Kembangan - Chai Chee (KCC). Under the Repair and Redecoration (R&R) works, 58 blocks in KCC were given fresh coats of paint, and old building amenities were repaired and replaced. In Lengkong Tiga, under the Neighbourhood Renewal Programme, the neighbourhood was rejuvenated with added localised enhancements such as park shelters, playgrounds and jogging track. These are just some examples of the works that we had done to improve the quality of residents' living environment.

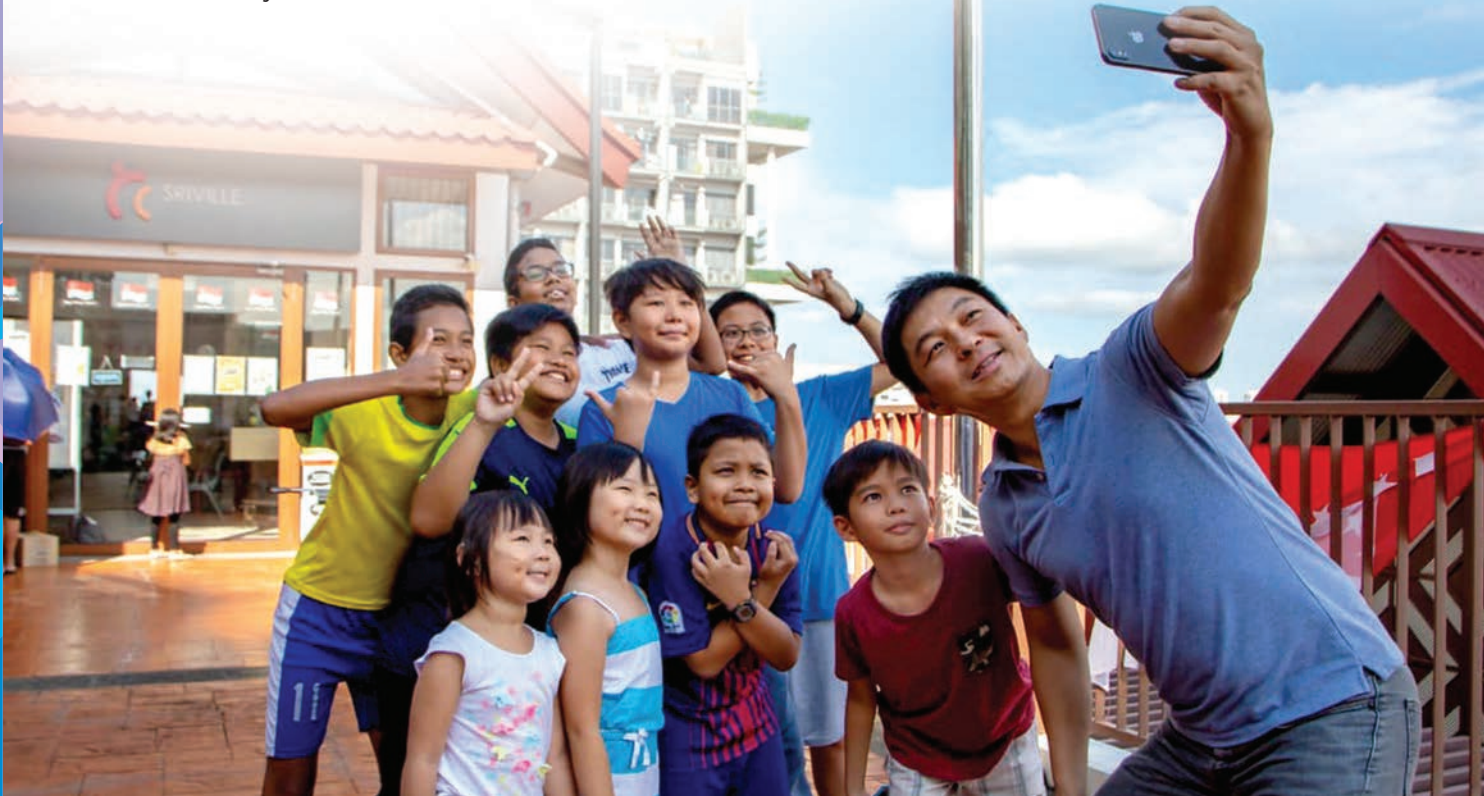
We are constantly making sure that the needs of our residents are met. As Singapore's ageing population increases, we also try to make sure that the amenities in the community are able to meet the future needs of our residents. One such project is the construction of a Silver Zone along Chai Chee Road. To make the road safer and more convenient for senior pedestrians, we will put up new signs and road features to change the behaviour of drivers so that they would slow down.

We will also implement more localised estate improvement plans to upgrade older amenities and construct new infrastructures such as linkways, shelters and playgrounds to create a more connected and conducive neighbourhood for our residents to live in.

Another initiative you can look forward to is the new Community Link (ComLink) that will be set up in KCC to provide a more targeted and concerted intervention to better support the poor and vulnerable families staying in rental units. This initiative is brought together with the support of agencies, community partners and grassroots groups to better suit the needs of these residents. I hope that this would also develop a sense of community and mutual help, with neighbours supporting one another.

With your support, let us work together as one to build a better Kembangan-Chai Chee. I look forward to continue on this journey with you for many years to come.

**Yours truly,
Tan Chuan-Jin**



Our Community Bringing People Together

Snippets of Past Events & Activities

Number of benefitting blocks for completed cyclical works from 2015 – 2019:



Repair &
Redecoration
(R&R) Works
58 blocks



Reroofing
47 blocks



Rewiring
4 blocks



Refuse Chute
Flushing Systems
79 blocks



Booster Pumps
97 blocks



Water Pipes
34 blocks

One Community Day



Official Opening of Lift to Pedestrian Overhead Bridge near Blk 43 Chai Chee Street



Launch of Home Improvement Programme for Blks 331 – 352 Ubi Avenue 1



Kembangan – Chai Chee Town Night 2019



KEMBANGAN-CHAI CHEE

Some of the Completed Projects



Chai Chee



1 Lift Replacement Programme at Blks 25 - 27, 803 - 805 Chai Chee Road and Blks 842 & 846 Sims Avenue



2 Residents' Corner at Blk 61 Chai Chee Road



3 High-Volume Low Velocity Fan at Blk 23A Chai Chee Multi-Purpose Hall



4 Repair & Redecoration Works at Blks 19 - 24 Chai Chee Avenue



5 Construction of Barrier - Free Accessibility Ramp and Covered Linkway from Blk 51 Chai Chee Street to Bus Stop



6 Awning along Blk 43 Chai Chee Street



7 Children Playground at Blk 41 Chai Chee Street



8 Repair & Redecoration Works at Blks 38 & 39 Chai Chee Avenue



9 Integrated Family Playground at Blk 38 Chai Chee Avenue



10 Upgraded Playground at Blk 35 Chai Chee Avenue



11 Repair & Redecoration Works at Blks 1 & 2 Chai Chee Road



12 New Fitness Corner at Blk 1 Joo Chiat Road



13 Repair & Redecoration Works at Blks 2A to 3A Geylang Serai

Geylang Serai / Joo Chiat



14 Upgraded Fitness Corner near Blk 334 Ubi Avenue 1



15 Upgraded Fitness Corner near Blk 320 Ubi Avenue 1



Ubi



Lengkong Tiga



16 Extended Cycling and Jogging Track from Blk 103 to Blk 108 Lengkong Tiga, joining to NParks park connector



17 Upgraded Playground near Blk 108 Lengkong Tiga



18 Park Shelter with Noticeboard near Blk 116 Lengkong Tiga

KEMBANGAN-CHAI CHEE

Some of the Upcoming Projects

• Repair & Redecoration Works:

- Blks 331 to 352 Ubi Avenue 1
- Blks 32, 32A, 33 to 34, 35A, 35 to 37 and 40 Chai Chee Avenue
- Blks 10, 10A, 11, 25 to 27, 25A, 26A, 27A and 59 to 63 Chai Chee Road
- Blks 55 to 58 Chai Chee Drive
- Blks 807A to 807C and 808A to 808C Chai Chee Road
- Blks 301, 302, 304 to 306 and 311 to 330 Ubi Avenue 1

• Rewiring Works:

- Blks 29A, 29B and 29 Chai Chee Avenue
- Blks 33 to 35 Chai Chee Avenue

• Upgrading of Playgrounds:

- Blk 11 Chai Chee Road
- Blk 4 Joo Chiat Road

• Upgrading of Residents' Corner at Blk 846 Sims Avenue

• Upgrading of Fitness Corner at Blk 332 Ubi Avenue 1

• Construction of Shelter near Stage Area at Blk 35 Chai Chee Avenue

Silver Zone Gateway Treatment by LTA

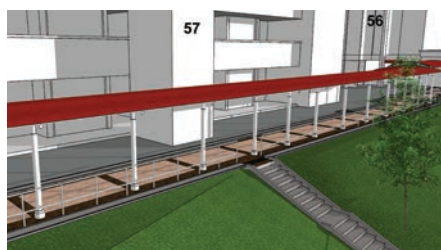
- Reducing speed limits
- Narrowing roads to lower vehicle speeds
- Guiding pedestrians to specific crossing points



Construction of Pavilion and BBQ Pits near Blk 42 Chai Chee Street



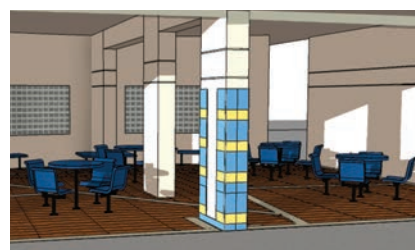
Construction of Linkway and Drop-Off Porch between Blks 808B & 808C Chai Chee Road



Construction of Linkway between Blks 56 & 57 Chai Chee Drive



Upgrading of Senior Citizen Corner at Blk 319 Ubi Avenue 1



Upgrading of Residents' Corner at Blks 32 & 40 Chai Chee Avenue

Neighbourhood Renewal Programme:

Blks 25 – 27, 29, 29A, 803 – 805 Chai Chee Avenue / Road



Upgrading of High Linkway to include Barrier-Free Accessibility Connection



Barrier-Free Accessibility Lift with Linkway between Blks 25 & 32 Chai Chee Road



Proposed Activity Trail along Blks 803 – 805 Chai Chee Road



New Playground near Blks 803 – 805 Chai Chee Road



Drop-Off Porch Between Blks 804 & 805 Chai Chee Road



New Open Hardcourt near Blks 803 – 805 Chai Chee Road



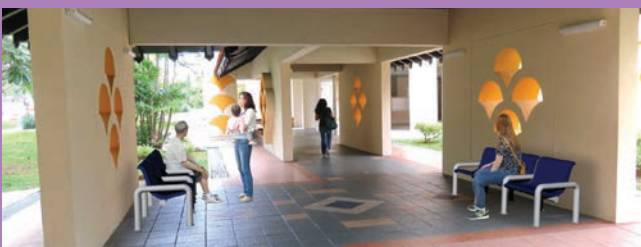
Covered Ramp / Stairs & High Linkway Between Blks 27 & 803 Chai Chee Road



Drop-Off Porch & Linkway Connecting to Blk 29A Chai Chee Avenue



Electrical Load Upgrading for Blks 25 – 27 & Blks 803 – 805 Chai Chee Avenue / Road



Addition of Benches along Linkway from Blks 29A to 29B Chai Chee Avenue

*Images shown are for illustration purposes only. Actual designs may vary from the images.

MARINE PARADE

Message from

Mr Goh Chok Tong
MP for Marine Parade GRC



Dear Residents,

Over the last four years, together with your Town Council, we have made Marine Parade an even friendlier and better home.

With your feedback, we have improved the infrastructure and amenities of Marine Parade. Our Polyclinic has been upgraded, complete with an x-ray facility. Last year, we opened the St Luke's ElderCare Marine Parade Senior Care Centre. It is much needed and welcomed. With this, we now have a full range of social facilities for all ages in Marine Parade.

Your Town Council has constructed and upgraded our estate's playgrounds, fitness corners, linkways, drop-off porches and other amenities to bring about a more conducive home for you.

We look forward to 2023/24 when the MRT will come to Marine Parade. We are fortunate to have two stations when we were initially expecting one - the Marine Parade and Marine Terrace Stations. Around that time, our Marine Parade Community Club and Library would have been rebuilt.

19 blocks in our division are slated for Repair & Redecoration works and 26 blocks for rewiring works as part of the Town Council's cyclical maintenance programme. There will be some inconveniences but the programme will ensure that our building facilities are in good condition.

Residents of Marine Drive can look forward to a community plaza equipped with playground and fitness corner near Blk 77. More estate improvement works can be found on page 36 and 37.

Beyond the physical improvements, what stands out the most to me is the growth of our social services capacities to meet the different needs of the community. Our priority has always been to build a town that cares - one where people will look out for each other and where residents

take ownership of their estate and community.

Thanks to the hard work of government agencies, grassroots leaders, VWO partners and volunteers, we have become a closely-knit community. We have revived the kampong spirit of old. For example, programmes like the Community Network for Seniors enable our seniors to age actively in the community. WeCare@MarineParade which I founded in 2014 plays a modest but impactful role in getting services delivered holistically to the residents who need them.

One of WeCare's initiatives is EduGrow for Brighter Tomorrows, a family-centric, early intervention programme that tackles social mobility for underprivileged Marine Parade children. Established in 2016, it has made significant impact on its beneficiary children and families. I have personally seen the EduGrow children grow to become more confident in themselves and their studies.

Caregivers are often stressed, especially older caregivers who have to look after their spouses or frail parents. WeCare is now working to establish a Caregiver Support Network. I hope it will have your support.

Lastly, we are conceptualising a social services hub in Marine Parade to better serve our residents, especially the more vulnerable. As this is a big project involving many partners, it will take a couple of years to realise.

I hope that residents can continue to give us and the Marine Parade Town Council your support. Let us work together to build an even more vibrant and caring Marine Parade for all ages.

**Yours truly,
Goh Chok Tong**



Our Community Bringing People Together

Snippets of Past Events & Activities



Marine Parade Town
Carnival 2019



Official Opening Ceremony of
Promenade Market @ 84 Marine Parade



Community Events and Dialogue Sessions



Number of benefitting blocks for completed cyclical works from 2015 – 2019:



Repair &
Redecoration
(R&R) Works
46 blocks



Reroofing
55 blocks



Rewiring
17 blocks



Refuse Chute
Flushing System
25 blocks



Booster Pump
56 blocks

MARINE PARADE

Some of the Completed Projects



1 Repairs & Redecoration Works at Blks 80 - 83, 85 - 87 and 89 Marine Parade Central



2 Renovation of Promenade Market @ Blk 84 Marine Parade



3 St Luke's ElderCare Marine Parade Centre at Blk 86 Marine Parade Central



5 Upgraded Fitness Corner at Blk 66 Marine Drive



4 Repair & Redecoration Works at Blks 60 - 67 & 71 Marine Drive



6 Community Hall at Blk 66 Marine Drive



7 Upgraded Playground at Blk 31 Marine Crescent



8 Upgraded Fitness Corner between Blks 31 & 32 Marine Crescent



9 Upgraded Game / Badminton Court near Blk 46 Marine Crescent



10 Playground at Blk 15 Marine Terrace upgraded to Integrated Family Playground



11 Upgraded Playground at Blk 17 Marine Terrace



12 Awnings along Blk 12A Marine Terrace



13 Linkway from Blk 8 - 12 Marine Terrace



14 Drop-Off Porch behind Blk 50 Marine Terrace



15 Upgraded Playground near Blk 5 Marine Terrace



16 Covered Linkway from Blk 50A to Blks 52, 53 Marine Terrace & Bus Stop

MARINE PARADE

Some of the Upcoming Projects

- **Upgrading of Residents' Corner** at Blk 32 Marine Crescent
- **Upgrading of Community Plaza with Pavilion** at Blk 20 Marine Terrace
- **Upgrading of Fitness Corner** near Blk 2 Marine Terrace
- **Upgrading of Street Soccer Court and Basketball Court** next to Blk 6 Marine Terrace
- **Construction of Covered Linkway** from Blk 53 Marine Terrace to Blk 12 Marine Terrace
- **Rewiring Works:**
 - Blks 60 to 67 Marine Drive
 - Blks 81 to 89 Marine Parade Central
 - Blks 50 to 59 Marine Terrace

Repair & Redecoration Works:

- Blks 27 to 35 Marine Crescent
- Blks 50 to 59 Marine Terrace



Thomson-East Coast Line (TEL) Marine Parade Station by LTA



Community Plaza

between Blks 77, 78 & 79 Marine Drive



New features provided:

- New pavilion with upper viewing platform
- Shelters over facilities within the plaza
- Ramps for ease of access
- New sheltered fitness corner for the elderly
- Upgrading of existing playground next to Blk 78 Marine Drive
- Upgrading of the fitness corners for elderly next to Blk 78
- New fitness corner for adults next to Blk 77



*Images shown are for illustration purposes only. Actual designs may vary from the images.

MACPHERSON

Message from

Ms Tin Pei Ling

MP for MacPherson SMC



Dearest Residents,

MacPherson holds a special place in my heart. Serving MacPherson is a great honour for me and my team. Over the years, I am happy that many infrastructure improvements and new initiatives were put in place to enhance our quality of living here in MacPherson.

Since 2015, many HDB blocks in MacPherson have benefitted from estate cyclical and improvement works. 66 blocks were given fresh coats of paint and their building amenities were rejuvenated under the Repair & Redecoration works. 8 blocks had undergone the Home Improvement Programme which helps to alleviate common maintenance issues in older flats. 5 blocks completed the Lift Upgrading Programme that provides greater ease for our residents, especially the older folks.

In addition, our older communal facilities such as playgrounds and fitness corners were upgraded. New facilities such as covered linkways, drop-off porches and lift at the overhead bridge were built as well. These improvements were made gradually over time to revitalise our ageing estate.

We also saw the completion of two Downtown Line stations, MacPherson and Mattar, which opened in 2017. These stations were additions to the existing 3 MRT stations (Paya Lebar and Aljunied on the East - West Line, and MacPherson on the Circle Line) in our estate, making MacPherson even more connected to the rest of Singapore.

New HDB developments, such as recently completed Built-To-Order (BTO) project, MacPherson Residency, as well as MacPherson Spring, were added to the estate demographic. These new additions had brought vibrancy to our mature estate.

In the coming years, we intend to implement more block and precinct improvements. Residents can expect new amenities such as playgrounds, drop-off porches and linkways. Also, with your support, 19 blocks will undergo Neighbourhood Renewal Programme and 16 blocks will benefit from HIP. We hope to build more senior-friendly facilities to cater to the growing needs of our ageing population in MacPherson as well.

We will continue to build on what we have and to serve residents with all our heart.

At MacPherson, We Care!

**Yours truly,
Tin Pei Ling**



Our Community Bringing People Together

Snippets of Past Events & Activities



Neighbourhood Renewal Programme (NRP) Events



MacPherson Community Night 2018



Litter Picking Activities



Cleaners' Appreciation Day



Number of benefitting blocks for completed cyclical works from 2015 – 2019:



Repair &
Redecoration
(R&R) Works
66 blocks



Reroofing
34 blocks



Transfer Pumps
12 blocks



Refuse Chute
Flushing Systems
56 blocks



Booster Pumps
102 blocks



Water Pipes
70 blocks

Some of the Completed Projects



1 Downtown Line - Mattar Station
by LTA



2 Covered Linkway from Blk 77 - 78 Circuit Road



3 Upgraded Playground in front of Blk 31 Balam Road



4 Repair & Redecoration Works at Blks 79 & 79A
Circuit Road Food Centre



5 Upgraded Basketball Court
behind Blk 19 Balam Road



6 Upgraded Playground in front of Blk 19 Balam Road



7 Upgraded Fitness Corner behind Blk 61 Circuit Road



8 Downtown Line - MacPherson Station by LTA



9 Repairs & Redecoration Works at Blk 117 Aljunied Avenue 2 Market & Food Centre



10 Covered Linkway from Blk 117 - 119 Aljunied Ave 2



11 Replacement of Lifts A, B and C at Blk 118 Aljunied Avenue 2



12 Covered Linkway from Lift "D" to Lift "E" at Blk 125 Geylang East Ave 1



13 Upgraded Residents' Corner at Blk 124 Geylang East Ave 1



14 Integrated Family Playground in front of Blk 128 Geylang East Avenue 1



15 Upgraded Playground near Blk 125 Aljunied Road



16 Upgraded Covered Linkway from Blk 133 Geylang East Ave 1 to Geylang East Public Library



17 Covered Linkway from Blk 134 Geylang East Ave 1 to Bus Stop

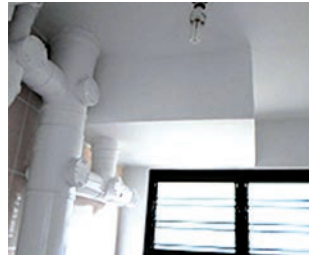
MACPHERSON

Some of the Upcoming Projects

- **Upgrading of Integrated Family Playground** near Blk 31A Balam Road
- **Upgrading of Games Courts:**
 - Near Blk 35 Circuit Road
 - Near Blk 20 Balam Road
 - Near Blks 96 & 100 Aljunied Crescent
- **Upgrading of Basketball Court and Game Court** near Blk 62 Circuit Road
- **Upgrading of Playground & Fitness Corner** near Blk 91 Paya Lebar Way
- **Upgrading of Playground** near Blk 57 Circuit Road
- **Upgrading of Community Plaza & Pavilion** near Blk 61 Circuit Road
- **Construction of Covered Linkway** over Existing Staircase/Ramp from Blk 18B Circuit Road to LTA's Linkway
- **Improvement to Lift Lobbies:**
 - Lift "C" of Blks 120 & 122 Geylang East Central
 - Lift "C" & "D" of Blk 124 Geylang East Avenue 1
 - Lift "D" of Blk 125 Geylang East Avenue 1
 - Lift "A" of Blk 126 Geylang East Avenue 1
- **Repair & Redecoration Works:**
 - Blks 113 to 116, 118 and 119 Aljunied Avenue 2
 - Blk 117 Aljunied Avenue 2
 - Blks 95 to 97, 97A, 98 to 106 Aljunied Crescent
 - Blks 107 to 112 Aljunied Crescent
 - Blks 125 & 126 Aljunied Road
 - Blks 43 to 52, 57 to 60, 69 and 85 to 88 Circuit Road
 - Blks 17A, 17B, 18A to 18D, 38 to 40, 61 to 67, 77 and 78 Circuit Road
 - Blks 91 & 93 Paya Lebar Way
 - Blks 120 to 124 Paya Lebar Way
 - Blks 55, 56, 90 and 94 Pipit Road
 - Blks 92A and 92 Pipit Road
 - Blks 120 to 123 Geylang East Central
 - Blks 124 to 129 and 130 to 134 Geylang East Avenue 1/2
- **Rewiring Works:**
 - Blks 27 to 29 Balam Road
 - Blks 68 and 70 to 72 Circuit Road
 - Blks 55, 56, 92A and 92 Pipit Road
 - Blks 31, 43 to 45, 47 to 52, 57 to 60 and 69 Circuit Road

*Home Improvement Programme by HDB

- Blks 129 - 134 Geylang East Ave 1/2



Repair to spalling concrete



Replacement of refuse chute hopper



EASE - Installation of grab bars



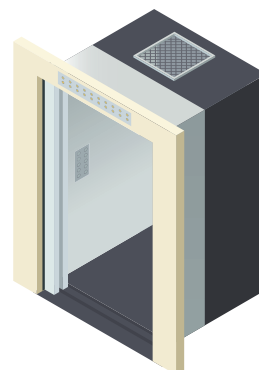
Provision of new clothes drying rack



Replacement of main door (non-fire rated) & gate



Upgrading of toilet/bathroom



• Upgrading of Existing Block Number Signs:

- Blks 95 to 112 Aljunied Crescent

Neighbourhood Renewal Programme:

Blks 113, 115, 116, 119 Aljunied Ave 2, Blks 120 - 124 Paya Lebar Way, Blks 27 - 29 & 33 Balam Road, Blks 41 - 42 Circuit Road and Blks 55 - 56, 92 & 92A Pipit Road



Construction of Park Shelter near Blk 27 Balam Road



Construction of Activity Hard Court adjacent to Blk 33 Balam Road



Upgrading of Playground near Blk 29 Balam Road



Construction of Sound Barrier Wall adjacent to Blk 55 Pipit Road



Construction of Linkway connecting Blk 120 Paya Lebar Way to Blk 86 Circuit Road



Improved Drop-off Porch between Blk 41 & 42 Circuit Road



Electrical Substation near Blk 118 Aljunied Ave 2 for Electrical Load Upgrading



Construction of Drop-off Porches at Blks 120 & 121 Paya Lebar Way



Construction of Fitness and Seating Area adjacent to Blk 120 Paya Lebar Way



Construction of Mini Park adjacent to Blk 121 Paya Lebar Way

*Images shown are for illustration purposes only. Actual designs may vary from the images.

MOUNTBATTEN

Message from

Mr Lim Biow Chuan
MP for Mountbatten SMC



Dear Residents,

2019 was yet another milestone for Mountbatten as it marked the 60th year since the estate was carved into a constituency. Over the last 13 years, I have worked with various government agencies, the Town Council and our community partners to keep the constituency well-maintained and constantly refreshed in terms of amenities. Many of these efforts came through the valuable input which we received from residents and community partners during our house visits and grassroots meetings. For this, I am truly thankful for the feedback.

Looking ahead, we will continue to plan to have better amenities and facilities for Mountbatten. Firstly, we have planned to convert the open space near Block 1 Pine Close to a sports recreation area consisting of a jogging track, children's playground, fitness corner and sheltered games court. Secondly, we will also be upgrading local amenities such as fitness corners, playgrounds and linkways in our HDB estates to enhance the living environment. We are also planning and working out the details for the construction of the new Mountbatten Community Club to be located along Jalan Dua. A pair of lifts at the Pedestrian Overhead Bridge next to Block 3 Jalan Batu will be built.

Of great significance to residents will be the coming Thomson East Coast Line (TEL) stations and the revamp of Kallang into a vibrant precinct via the "Kallang Alive" project.

TEL, the sixth line in Singapore will cut through Mountbatten with four stations: Founders' Memorial,

Tanjong Rhu, Katong Park, and Tanjong Katong. TEL will put residents closer to a train station and give them faster access to the city. The reduction in travelling time will provide greater convenience to residents. As the TEL stations are being constructed, we are already working with LTA to plan for more covered linkway to connect residents to the nearest transport nodes.

Residents can also look forward to Kallang's makeover as a destination for sport and world-class entertainment. Six developments will be built to complement the current Singapore Sports Hub including Singapore's first-ever velodrome, a football hub, and a tennis Centre. In addition, the iconic Kallang Theatre will be redeveloped to house sport, entertainment, and lifestyle amenities. Mountbatten residents will be able to have these facilities at their doorstep by 2025.

With such improvements, I hope that it will add to the vibrancy of the estate.

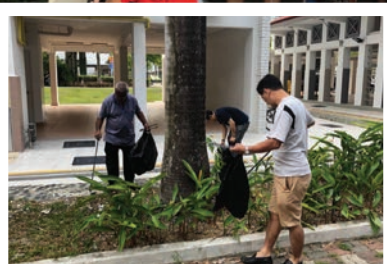
We will continue working with various community partners like Friends@St Hilda's, Tung Ling Community services, House of Joy and Thye Hwa Kwan to provide more activities for residents which will bond residents together as a community. Every effort by our residents will go a long way to build a constituency that all of us can call our home.

**Yours truly,
Lim Biow Chuan**



Our Community Bringing People Together

Snippets of Past Events & Activities



Clean and Green Events

House Visits



Community
Events and
Engagement



Number of benefitting blocks for completed cyclical works from 2015 - 2019:



Repair &
Redecoration
(R&R) Works
36 blocks



Reroofing
12 blocks



Transfer Pumps
5 blocks



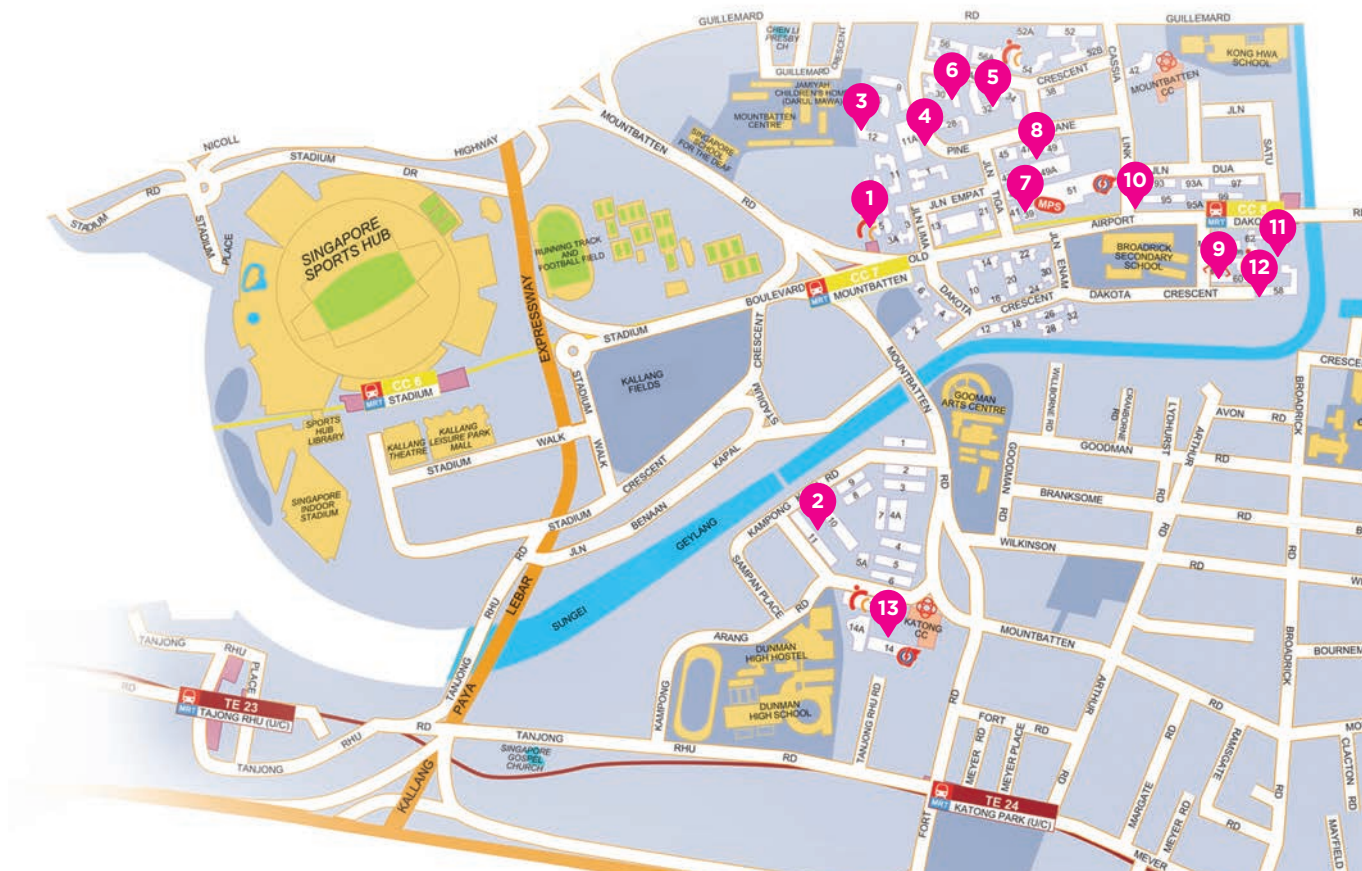
Booster Pumps
42 blocks



Water Pipes
24 blocks

MOUNTBATTEN

Some of the Completed Projects



1 Upgraded Playground near Blks 5 & 7 Pine Close



2 Upgraded Fitness Corner near Blk 10 Jalan Batu



3 Upgraded Integrated Playground at Blk 12 Pine Close



4 Covered Linkway between Blk 11A Pine Close and Blk 28 Cassia Crescent



5 Upgraded Playground in front of Blk 32 Cassia Crescent



6 Repair and Redecoration Works at Blks 32, 34, 36, 42 & 54 Cassia Crescent and Blks 10 & 12 Pine Close



7 Repair and Redecoration Works at Blks 39, 41, 43, 45, 47 & 49 Jalan Tiga



8 Upgraded Playground near Blk 47 Jalan Tiga



10 Upgraded Fitness Corner near Blk 95 Old Airport Road



9 Repair and Redecoration Works at Blks 58, 60 & 62 Dakota Crescent



11 Drop-Off Porch in front of Blk 62 Dakota Crescent



12 Upgraded Fitness Corner near Blk 58 Dakota Crescent



13 Drop-Off Porch near Blks 12 & 14 Kampong Arang Road

MOUNTBATTEN

Some of the Upcoming Projects

- **Upgrading of Fitness Corners:**
 - Near Blk 28 Cassia Crescent
 - Near Blk 32 Cassia Crescent
- **Upgrading of Linkways' Footpaths:**
Blks 2, 3, 4, 4A, 5, 5A, 6, 7, 8, 9, 10, 11 Jalan Batu, Blk 12 and 14 Kampong Arang Rd
- **Upgrading of Playgrounds:**
 - Near Blk 14 Kampong Arang Road
 - Near Blk 30 Cassia Crescent
- **Upgrading of Linkways / Drop-Off Porches:**
 - Blks 54 to 56A Cassia Crescent
 - Blks 60 / 62 Dakota Crescent
- **Construction of Drop-Off Porches:**
 - Blk 93 Jalan Dua
 - Blk 97 Jalan Dua
- **Provision of Residents' Corner** at Blk 99 Old Airport Road
- **Repair & Redecoration Works:**
 - Blks 1, 3, 3A, 5, 7 and 11 Pine Close
 - Blk 4A Jalan Batu
 - Blk 51 Old Airport Road
- **Rewiring Works:**
 - Blk 9 Pine Close
 - Blk 56 Cassia Crescent
 - Blks 93, 93A and 97 Jalan Dua
 - Blks 95 and 99 Old Airport Road
 - Blks 28 and 30 Cassia Crescent

Thomson – East Coast Line (TEL) by LTA:

Founders' Memorial Station, Tanjong Rhu Station, Katong Park Station, Tanjong Katong Station



Founders' Memorial Station

The Founders' Memorial station will be named after and situated next to a 5ha memorial being built to showcase the contributions of modern Singapore's founders.



Tanjong Rhu Station



Katong Park Station



Tanjong Katong Station

New Lift at Existing Pedestrian Overhead Bridge by LTA along Mountbatten Road near Blk 3 Jalan Batu



Sports-in-Precinct @ Mountbatten

Conversion of Open Space near Blk 1 Pine Close to a Sports Recreation Area

New features provided:

- Playground
- Fitness Corner
- Sheltered Games Court
- Jogging Track



EXAMPLES OF STATIC, WARM UP & EXERCISE EQUIPMENT FOR ADULTS



EXAMPLES OF SENIOR EQUIPMENT WITH ADJUSTABLE RESISTANCE LEVELS TO ACCOMMODATE DIFFERENT PHYSICAL ABILITY



EXAMPLES OF TRAMPOLINE PLAY AND MORE RUGGED PLAY SETS



EXAMPLE OF POSSIBLE ROCKCLIMBING PLAY STRUCTURES SUITABLE FOR DIFFERENT AGE GROUPS

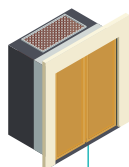
*Images shown are for illustration purposes only. Actual designs may vary from the images.

Upcoming Townwide Projects

The Town Council strives to ensure that the lifts within Marine Parade Town are safe for our residents and visitors. As such, the Town Council has two programmes, Lift Replacement Programme (LRP) and Lift Enhancement Programme (LEP), in place over the next few years.

LIFT REPLACEMENT PROGRAMME (LRP)

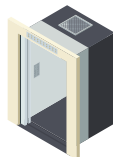
Lift Replacement Programme is an on-going cyclical programme to replace and upgrade older lifts.



193 lifts

that are more than 20 years old have been selected to be replaced over the next 3 years. They will be installed in accordance with the latest Building and Construction Authority's (BCA) code.

Lift openings will be created for those lifts that do not stop at every floor. A total of **17 lifts** are slated for this.

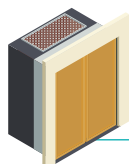


A total of **10,823 units** will benefit from these 193 lifts that are due to complete in 2022.

This replacement programme costs **\$29 million** which will be funded by the Town Council's *Lift Replacement Fund.



LIFT ENHANCEMENT PROGRAMME (LEP)



For lifts less than 20 years old, the Town Council has started the Lift Enhancement Programme to install BCA's recommended safety enhancement features to **1,174 lifts** in our Town gradually over the next few years.



Government subsidises **92.5%** of the LEP expenditure.

Some of the new features that residents can expect from this replacement programme are:

			LRP	LEP
	Two Independent Brakes	As compared to older lifts, new lifts will have 2 brakes working independently instead of one. In the event where the lift falls and one of the brakes fails, the other is still able to stop the lift car.	✓	
	Unintended Car Movement Protection (UCMP)	This new function will kick in to stop the lift cars in the event that the lifts move while their doors are open. The lifts will come to a halt at a distance not more than 200mm from the lift landing.	✓	✓
	3D Multi-Beam Sensors	New lifts will be equipped with 3D multi-beam sensors which act as a safety feature by triggering the reopening of the doors when they detect passengers or objects when the doors are closing. Older lifts use photocell sensors and mechanical safety edges. (Photocell sensors only project a single beam 300mm from the floor, while mechanical safety edge requires the lift door edges to be pushed inside when contact is made with an obstruction)	✓	
	Ascending Car Overspeed Protection (ACOP)	New lifts are equipped with ACOP which will activate the brakes to stop the lifts in the event when the lift cars overspeed upwards to the top of the shaft.	✓	✓
	Permanent Magnet Gearless Machine	Instead of motorised gears, new lifts are powered by permanent magnet gearless machines which make them more energy efficient and rides smoother.	✓	
	Slacken governor rope electrical safety device	Electrical safety device to detect the slackening of the governor rope, and which will initiate a stop of the lift car movement.		✓
	Electrical safety interlocking for multi-panel door	An interlocking switch for every lift door panel that ensures that when the lift door panel is open, the lift will stop moving immediately and remain in position.		✓
	Car apron	A smooth vertical part extending downwards from the sill lift car entrance. It is meant to avoid the risk of people at the lift landing falling into the lift shaft if the lift landing doors are opened when the lift car is stopped above the levelling position.		✓
	Light curtains	Light curtains as a door protective device.		✓

*Lift Replacement Fund - From April 2017, all Town Councils are required to set aside a minimum of 14% of the Service & Conservancy Charges (S&CC) collections and government grants into the new Lift Replacement Fund (LRF) to further enhance the safety and reliability of lifts as directed by Ministry of National Development (MND).

SolarNova Programme

Our Town Council is constantly exploring new ways to promote environmental sustainability and to bring about more cost-savings through our green initiatives.

Back in 2010, five blocks in Marine Crescent (Blocks 30 - 34) were fitted with Solar Photovoltaic (PV) panels on the rooftops as part of our collaboration with Housing Development Board (HDB) in their piloted test-bed of solar technology. The trial, aimed at conserving and optimising the use of energy in our housing estates, proved to be a success and MPTC participated in HDB's island-wide solar initiatives in 2014. Now, a total of 121 blocks have Solar PV panels on their roofs.

These panels tap on solar energy and convert it to electricity to power common services such as lighting, lifts and water pumps. Excess energy generated will then be exported to SP PowerGrid and be offset against the total electricity bill. It is estimated that such energy utilised by common services can conserve up to approximately 30% of the consumption for one block.

In the next few years, more HDB blocks in our Town will be retrofitted Solar PV panels under the SolarNova Programme. Through the expansion of such installations, energy usage can be optimised with lower usage of power from the grid, in turn reducing carbon emissions in the long term. Progressively, our Town is moving towards becoming a more energy-efficient and eco-friendly community and contributing to a greener world.





**Marine Parade
Town Council**

Block 50 Marine Terrace
#01-265 Singapore 440050
Tel: 6241 6044
Toll-free line: 1800-241 6487
Fax: 6444 0919

  @marineparadetc

 internet@mptc.org.sg

 Website: <http://www.mptc.org.sg>



Scan the
QR code to
send us your
feedback!

Every effort has been made to ensure that the contents of this publication are correct and up-to-date at the time of printing. Some details are liable to change. The Town Council cannot be held responsible for any consequences arising from errors or omissions in this publication. No part of this publication may be reproduced in any form without prior written consent of the Town Council.

Publication Date: March 2020

